

# *PolyChromE*



*Le Monde de la Décoration*



*PolyChromE* est un produit décoratif intérieur en phase aqueuse, sans odeur, à l'aspect multicolore et granité. L'harmonie des faux unis et le raffinement des dynamiques lui confèrent une ambiance colorée et originale. Idéal pour décorer les murs d'écoles, les cages d'escaliers, les hôtels, les salles de spectacle, les hôpitaux.

*PolyChromE* is a water-based interior decorative product, odourless, with a multicolored and granitic aspect. The harmony of the apparent plain hues and the sophistication of the dynamics, impart a colourful and original atmosphere. Ideal for decorating the interior walls of schools, stairwells, hotels, auditoriums and hospitals.



#### APPLICATION DE LA SOUS-COUCHE

Sur des supports correctement préparés, conformes aux DTU en vigueur (couche d'impression obligatoire exemple MINERAL PRIM). Appliquer la sous couche colorée  $\pm 200$  g/m<sup>2</sup> au rouleau poils moyens.

#### APPLYING THE FIRST COAT

Make sure the support has been carefully prepared in conformity with the current DTU (a primer such as MINERAL PRIM is obligatory). Apply the coloured first coat  $\pm 200$  g/m<sup>2</sup> using a medium thickness roller.



#### APPLICATION DE LA FINITION *PolyChromE*

Après séchage complet de la sous couche, appliquer en couches croisées et régulières la finition *PolyChromE* à la cuve sous pression ou au pistolet à gravité (pour les petites surfaces). Pour obtenir une meilleure résistance chimique ou mécanique, vous pouvez appliquer une couche de vernis acrylique sur les *PolyChromE* secs.

#### APPLYING THE FINISHING *PolyChromE* COAT

After complete drying, apply *PolyChromE* in a regular coat, using cross movements using a pressure tank or a gravity spray gun, (for small areas). To obtain a better chemical or mechanical resistance, you can apply a coat of acrylic varnish onto *PolyChromE* once dry.

#### CONSEIL

Pour une utilisation au pistolet à gravité, vous pouvez diluer le produit jusqu'à 5 % d'eau. Ne pas utiliser de mélangeur électrique.

#### ADVICE

When using a gravity spray gun, you can dilute the product with up to 5 % water. An electric paint mixer must not be used.

#### CARACTÉRISTIQUES

Très résistant, entretien facile, lavable, sans raccord, sans odeur.

Nettoyage des outils à l'eau.

Craint le gel.

Conservation : 6 mois en emballage d'origine non entamé.

#### CHARACTERISTICS

Strong, easy to clean, washable, no matching, odourless.

The tools can be washed in water.

Sensitive to frost.

Keep 6 months in an unopened bucket.

#### RENDEMENT

$\pm 200$  g/m<sup>2</sup> pour la sous couche  
 $\pm 200$  g/m<sup>2</sup> pour les *PolyChromE*

#### COVERAGE M<sup>2</sup>

First coat :  $\pm 200$  g/m<sup>2</sup>  
*PolyChromE* :  $\pm 200$  g/m<sup>2</sup>

#### CONDITIONNEMENTS

Kit de 25 m<sup>2</sup> comprenant :

- Sous-couche : 5 kg
- *PolyChromE* : 5 kg

#### PACKAGING

Kit for 25 m<sup>2</sup> contains :

- 5 kg first coat
- 5 kg *PolyChromE*

Kit de 100 m<sup>2</sup> comprenant :

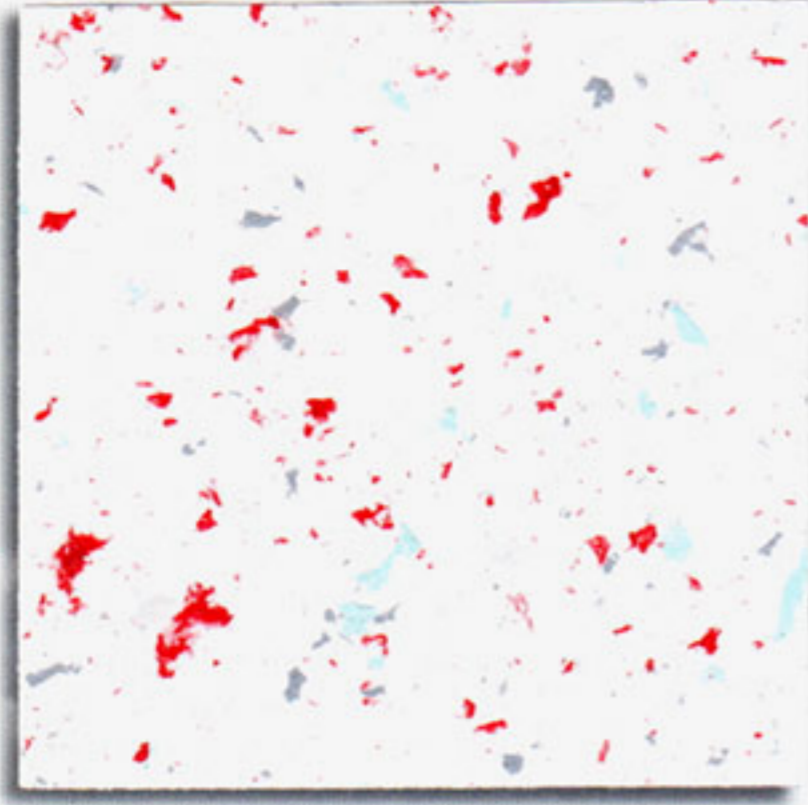
- Sous-couche : 20 kg
- *PolyChromE* : 20 kg

Kit for 100 m<sup>2</sup> contains :

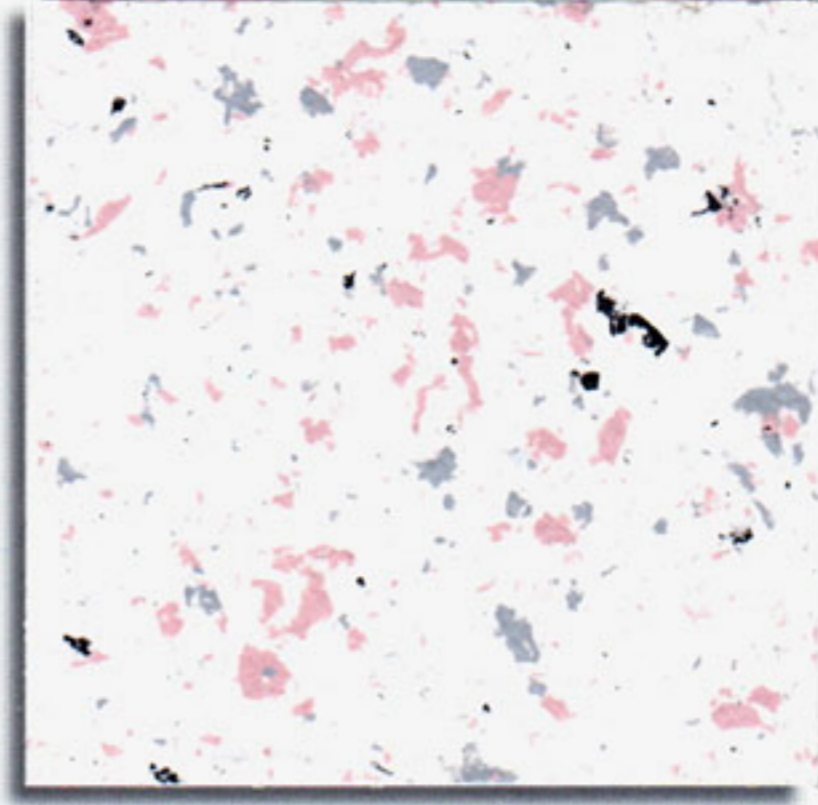
- 20 kg first coat
- 20 kg *PolyChromE*



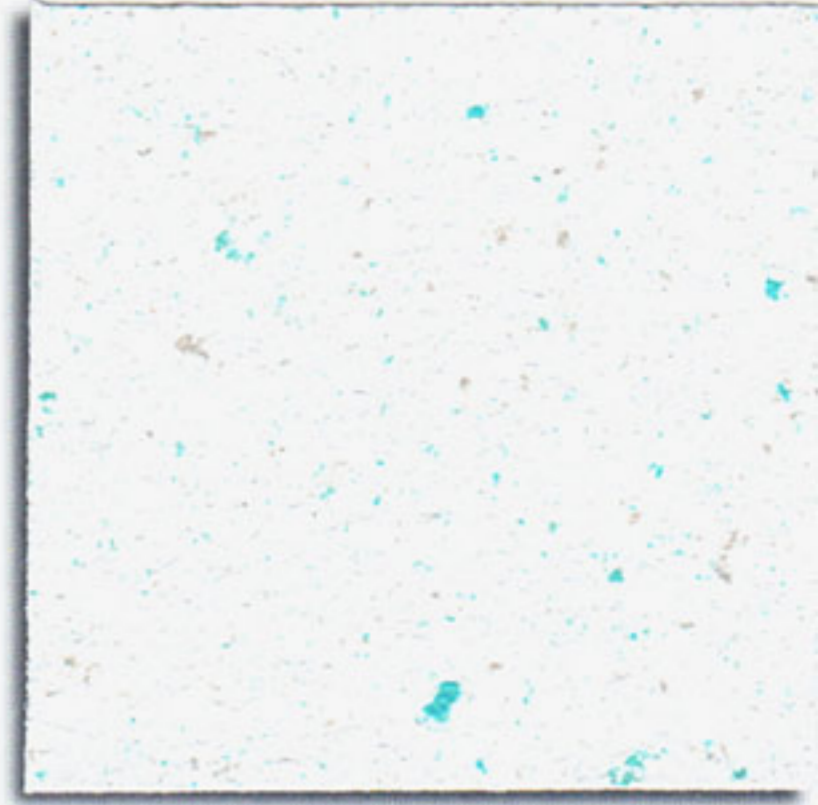
# PolyChromE



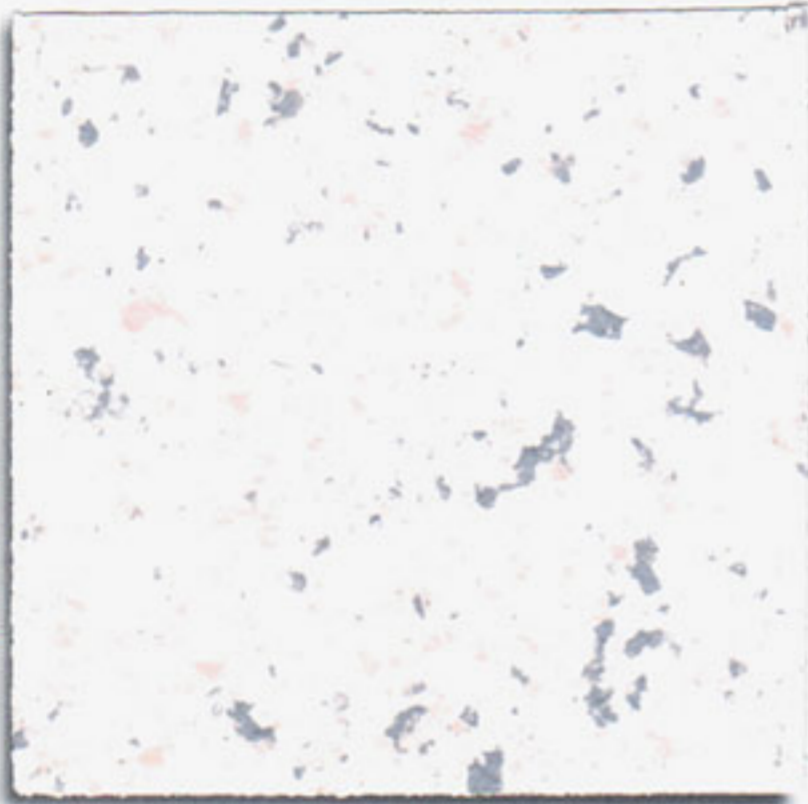
PolyChromE 700



PolyChromE 701



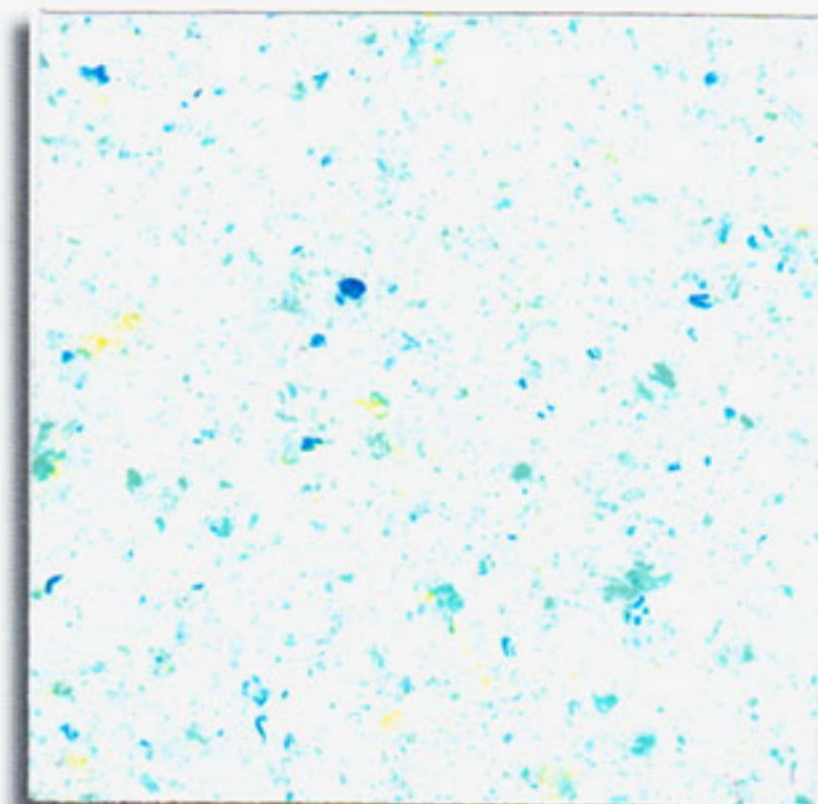
PolyChromE 702



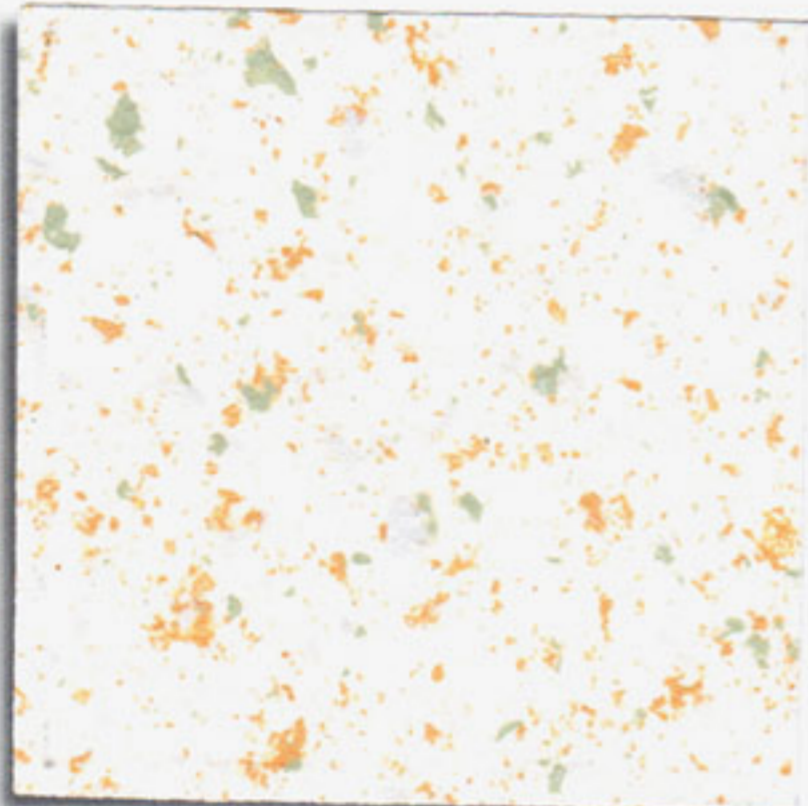
PolyChromE 703



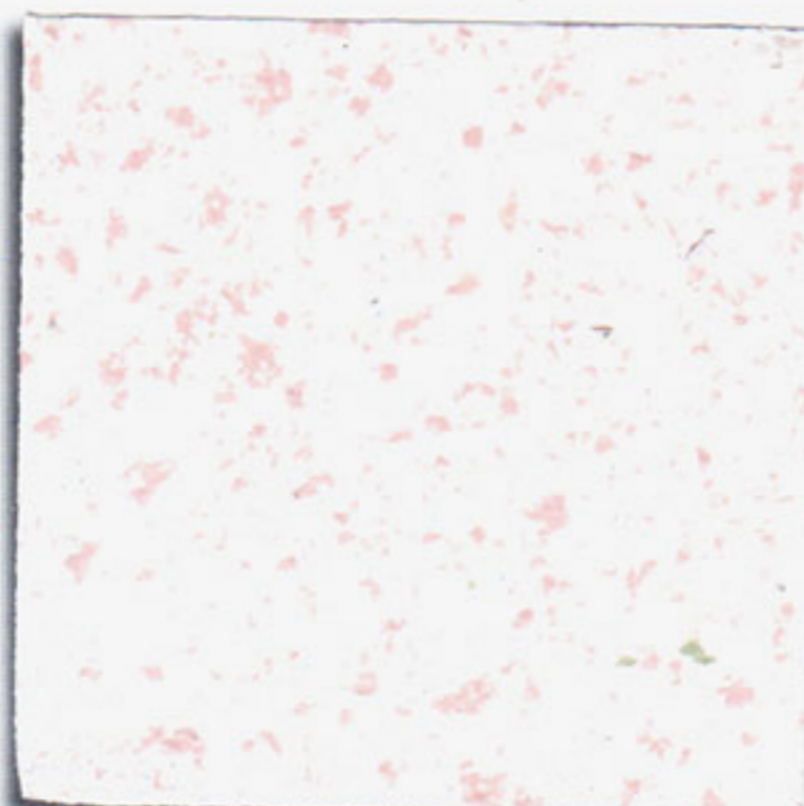
PolyChromE 704



PolyChromE 705



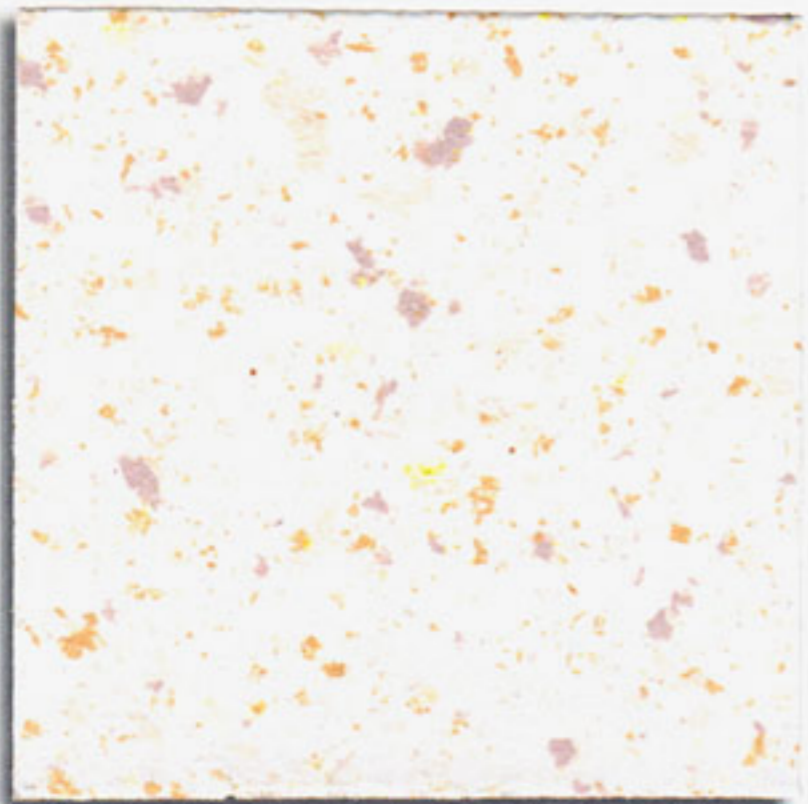
PolyChromE 706



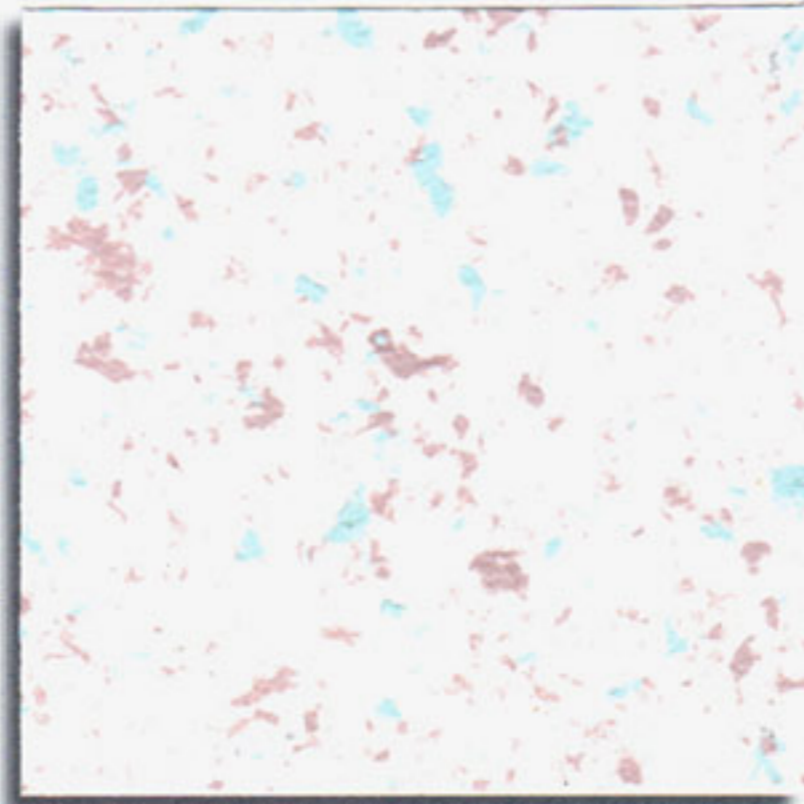
PolyChromE 707



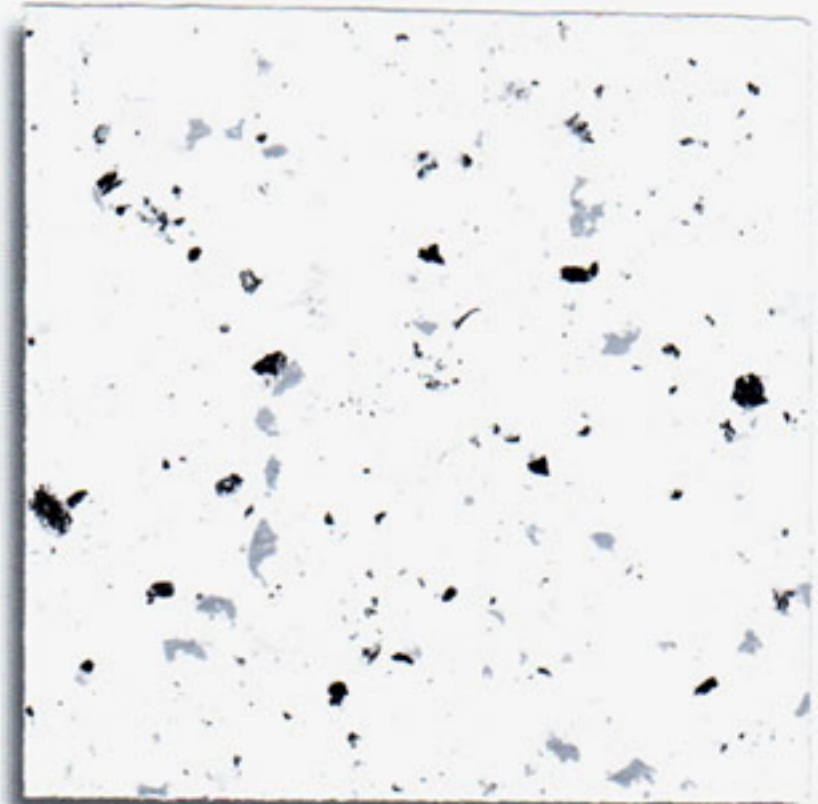
PolyChromE 708



PolyChromE 709



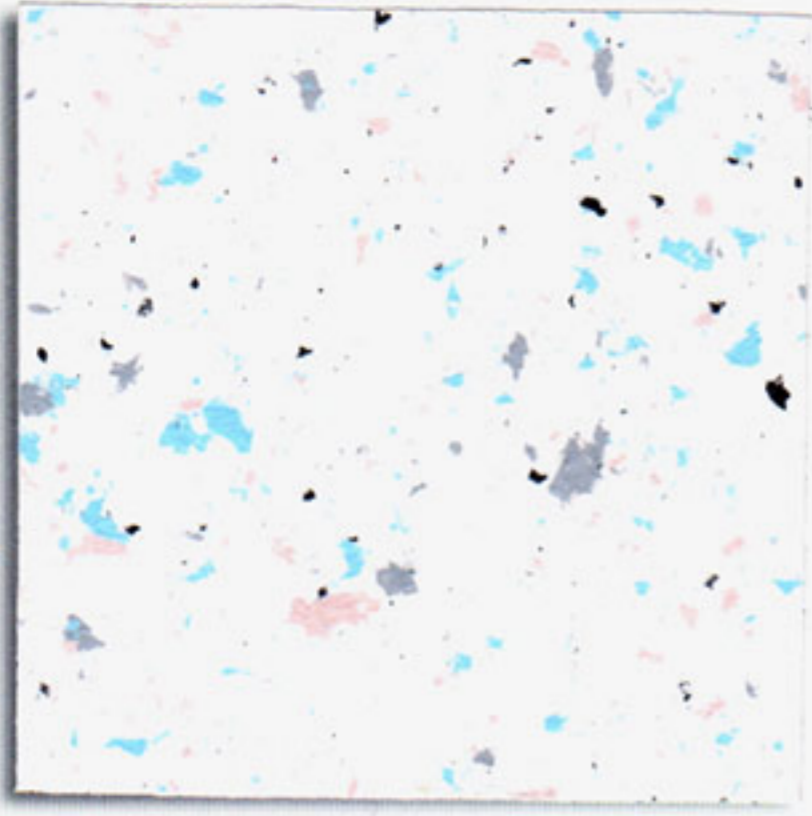
PolyChromE 710



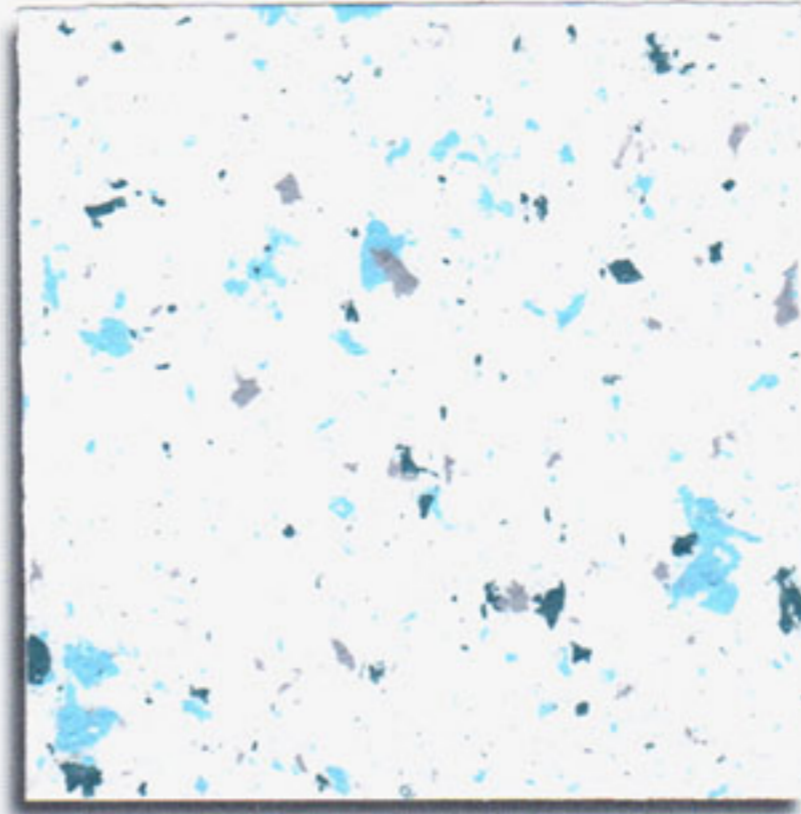
PolyChromE 711



# PolyChromE



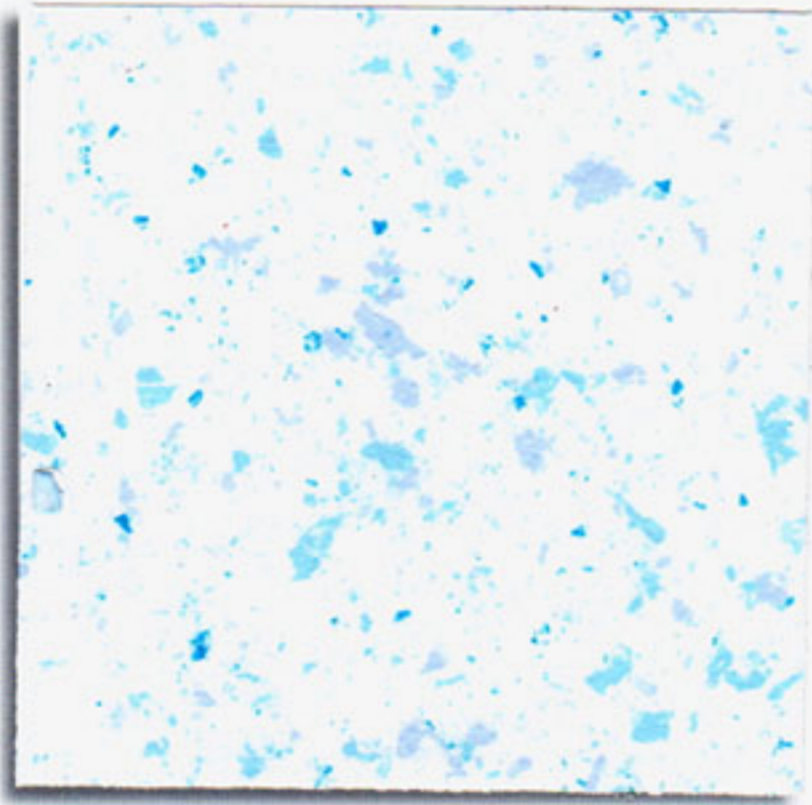
PolyChromE 712



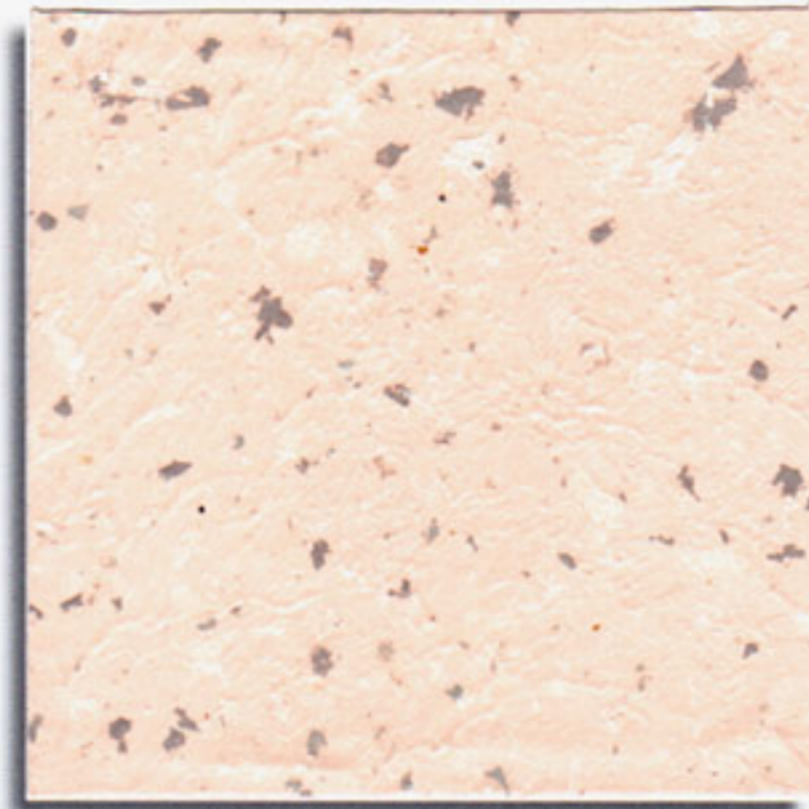
PolyChromE 713



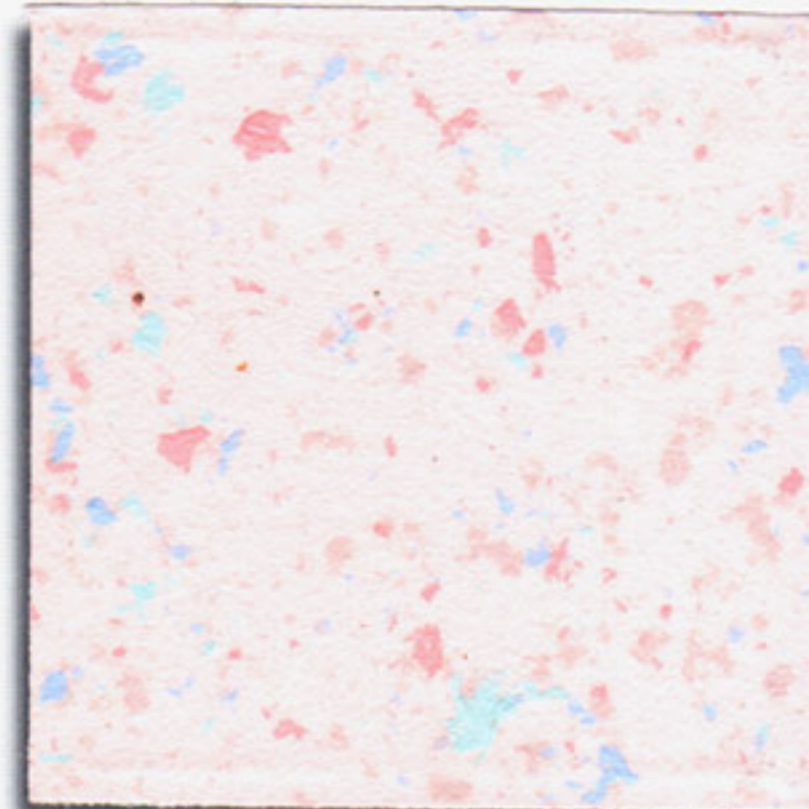
PolyChromE 714



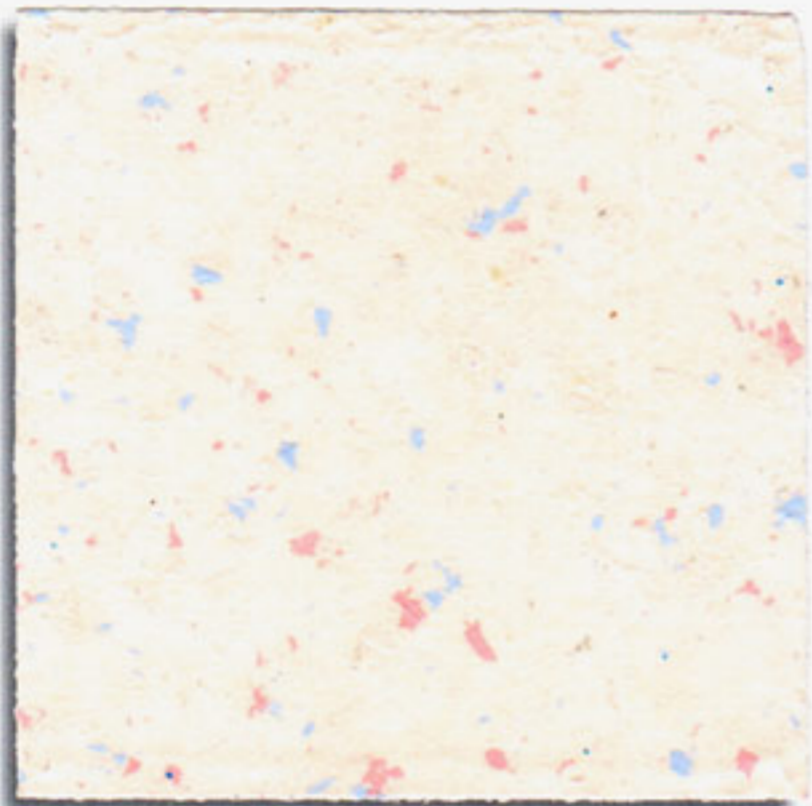
PolyChromE 715



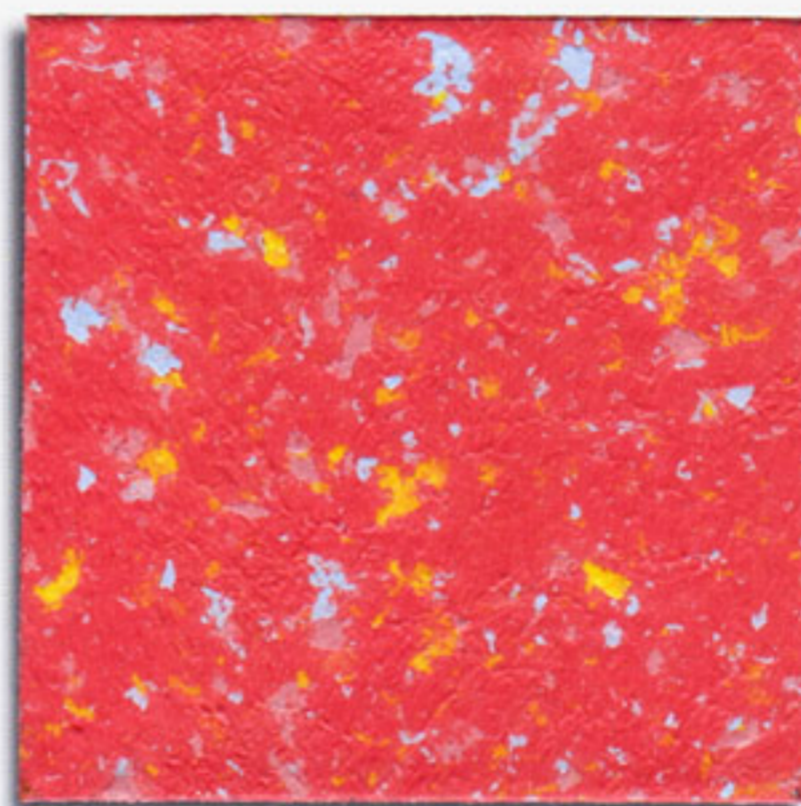
PolyChromE 716



PolyChromE 717



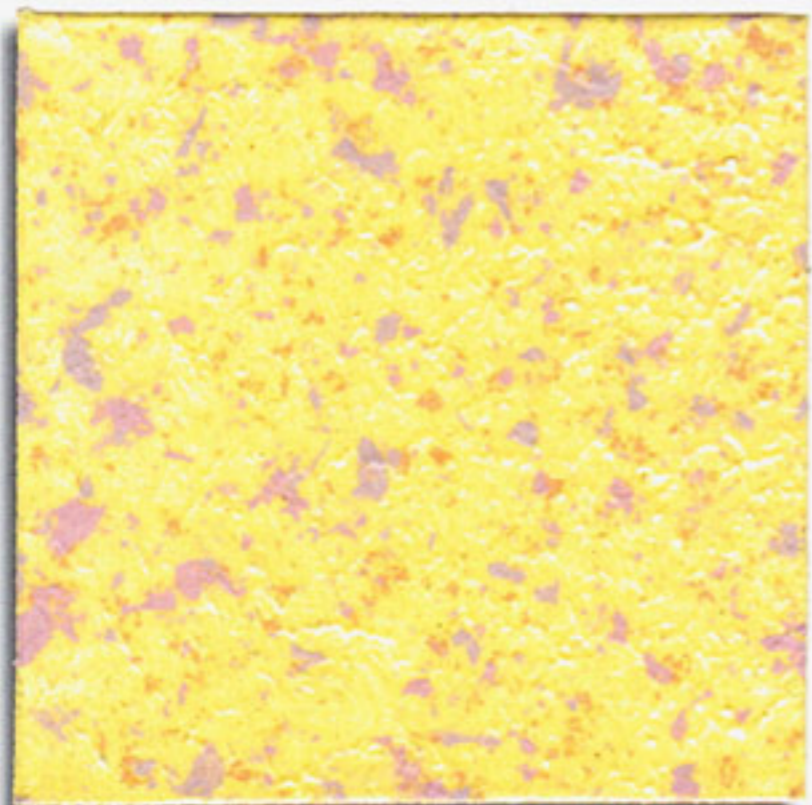
PolyChromE 718



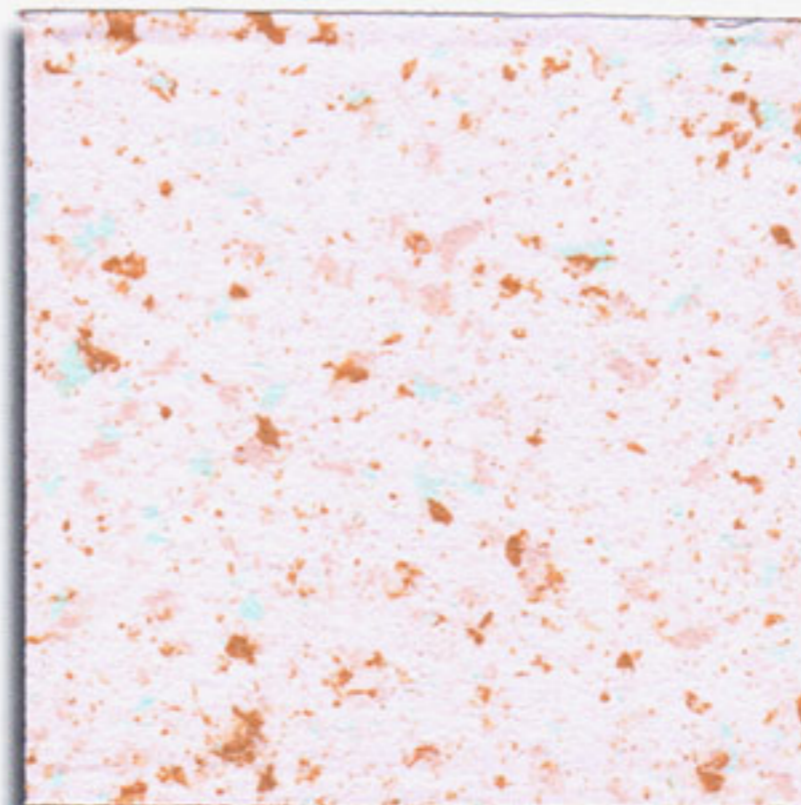
PolyChromE 719



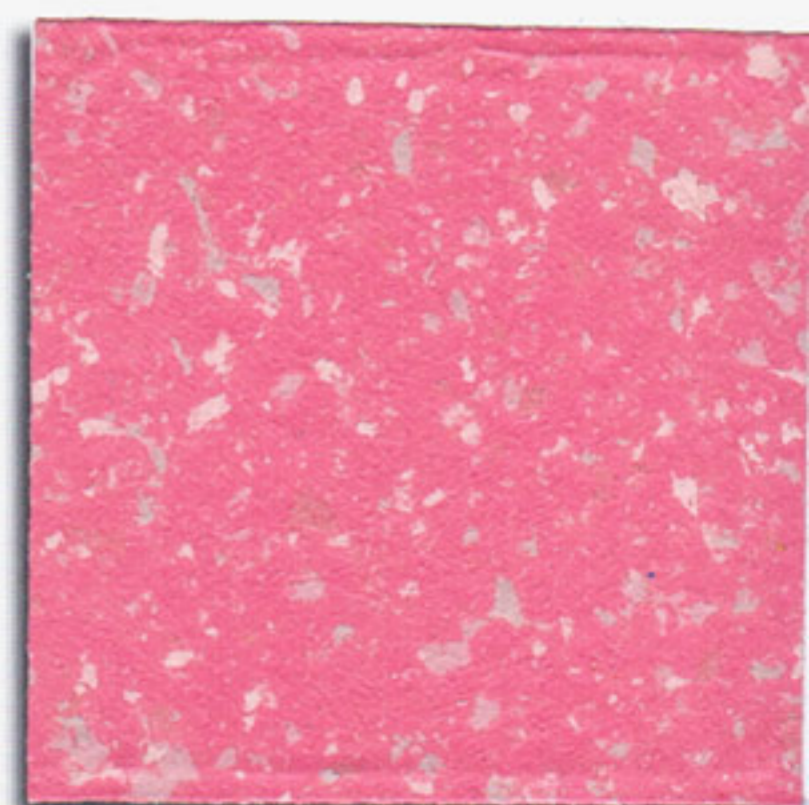
PolyChromE 720



PolyChromE 721



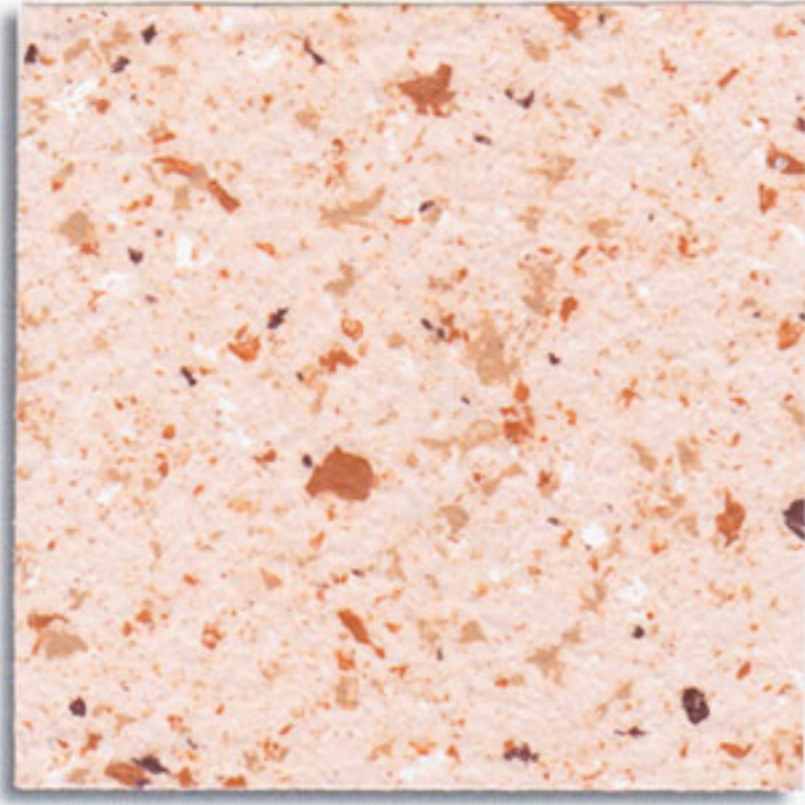
PolyChromE 722



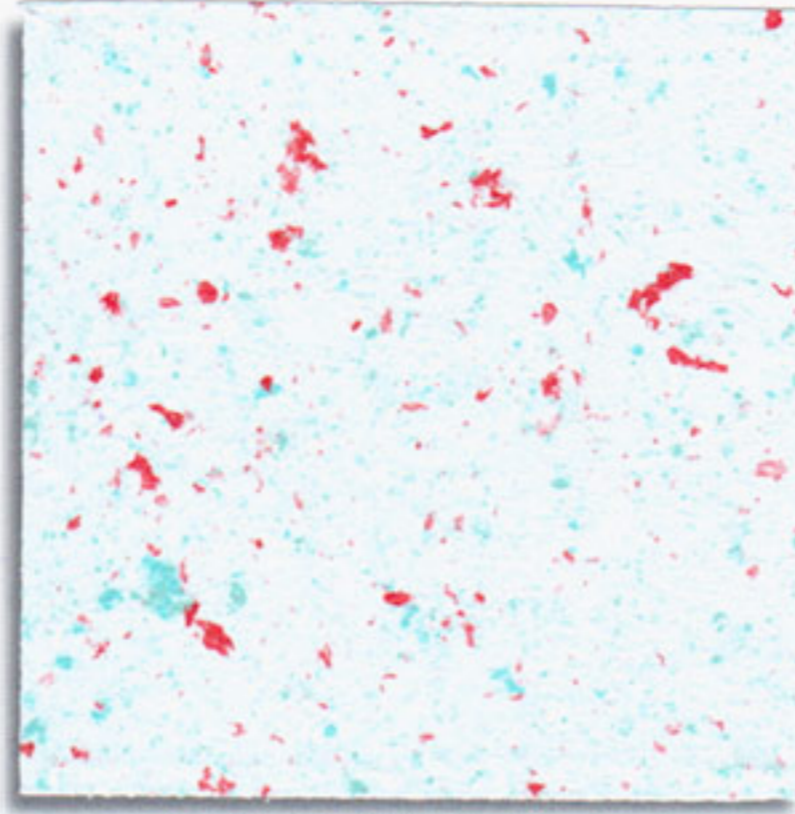
PolyChromE 723



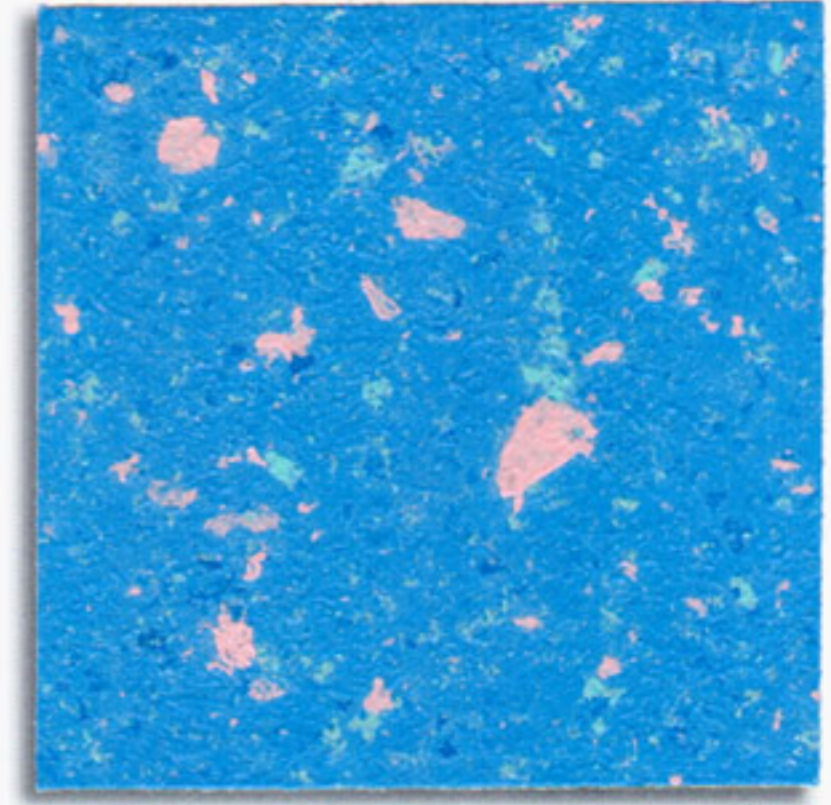
# PolyChromE



*PolyChromE* 724



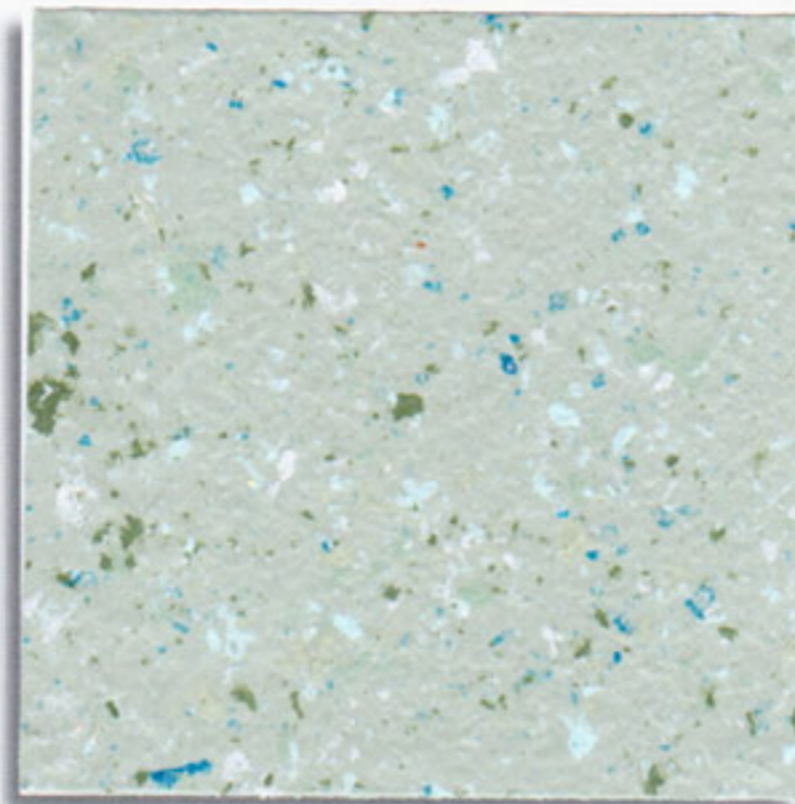
*PolyChromE* 725



*PolyChromE* 726



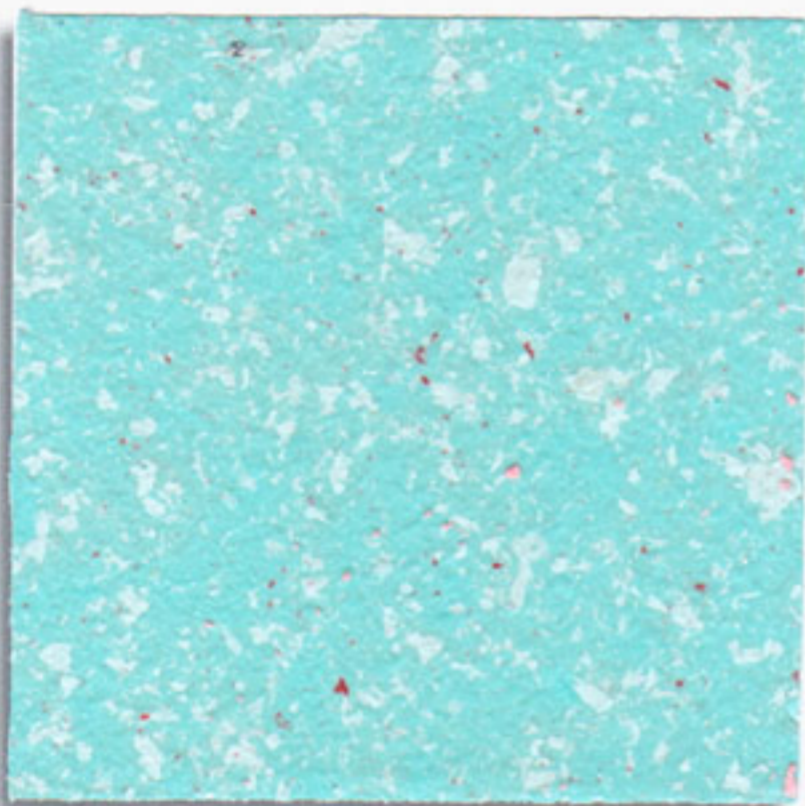
*PolyChromE* 727



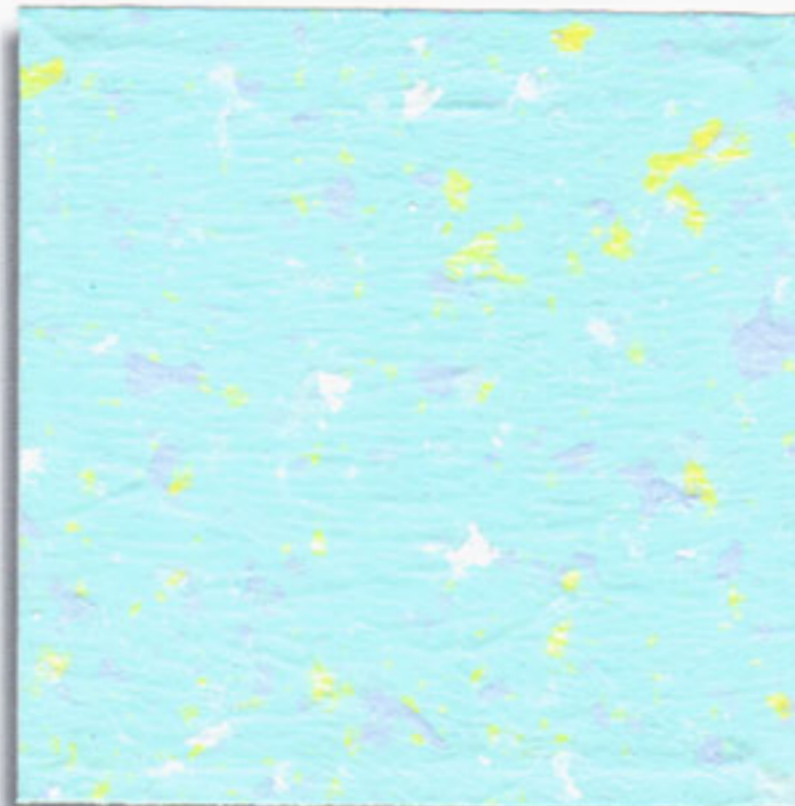
*PolyChromE* 728



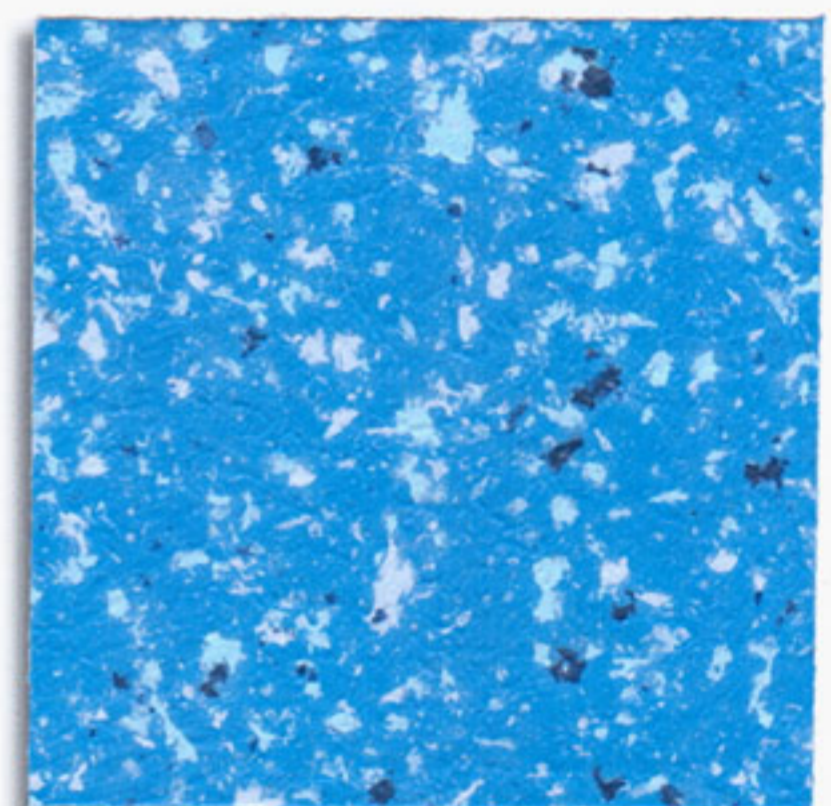
*PolyChromE* 729



*PolyChromE* 730



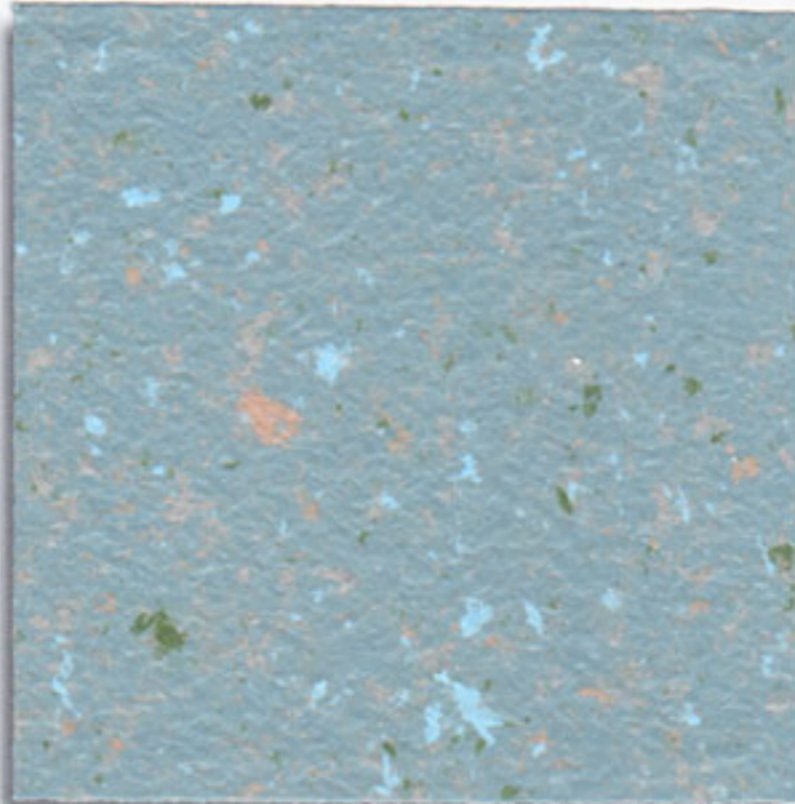
*PolyChromE* 731



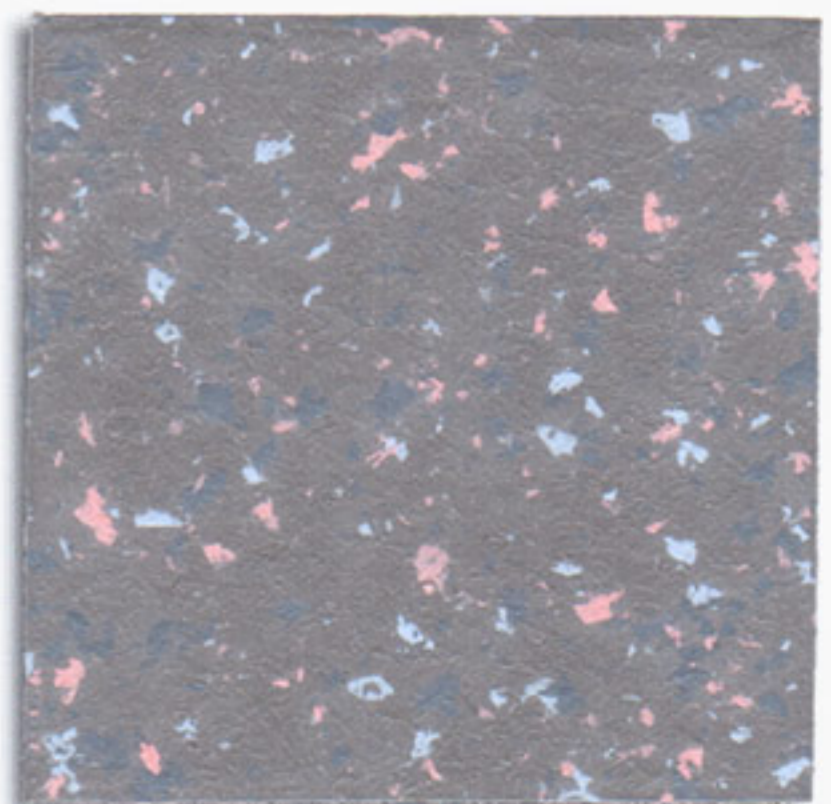
*PolyChromE* 732



*PolyChromE* 733



*PolyChromE* 734



*PolyChromE* 735





24100 BERGERAC - France - Tél. : 33 (0)5 53 27 40 20 - Fax : 33 (0)5 53 73 25 75  
e-mail : [contact@mineral-color.com](mailto:contact@mineral-color.com) - Site web : [www.mineral-color.com](http://www.mineral-color.com)

06 09 2001